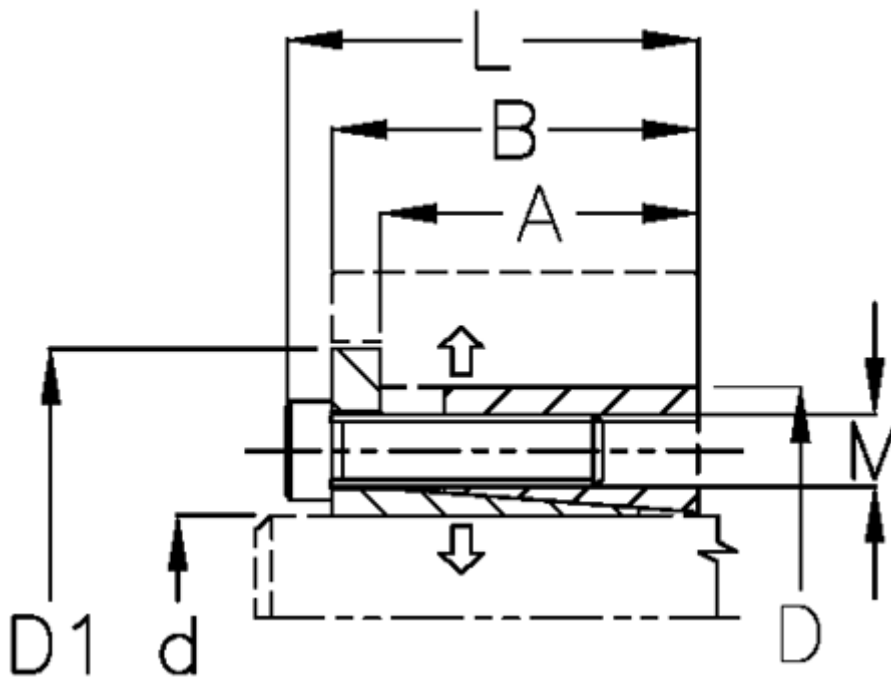


Article number: 434600095

Description: Rota-fix shaft-hub connection ES 95x135  
Steel

Note: Self centering - high transmissible torque. During the clamping, the hub can axially displace.

## Measures



|               |        |   |        |
|---------------|--------|---|--------|
| A mm          | = 29.0 | M mm  | = M10  |
| B mm          | = 40.0 | P N/mm <sup>2</sup> surface pressure on shaft/hub | = 130  |
| D1 mm         | = 144  | Surface roughness                                 | = -    |
| d H8 mm       | = 95   | T N m torque                                      | = 7800 |
| D mm          | = 135  | Ts N m bolt tightening torque                     | = 83   |
| Fit tolerance | = -    |   |        |
| F kN torque   | = 160  |   |        |
| L mm          | = 50   |   |        |